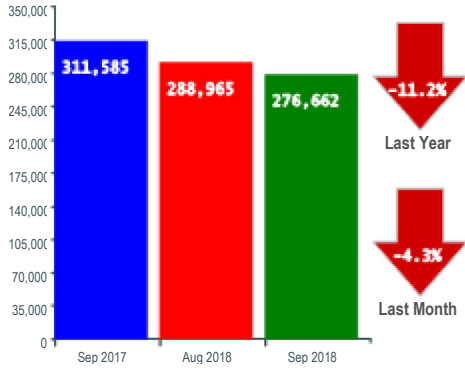


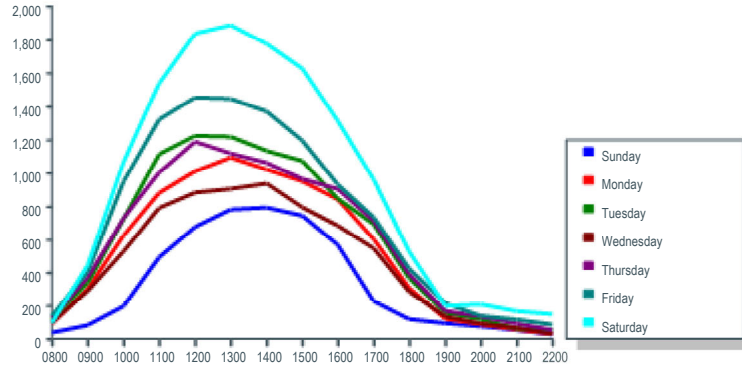
Monthly Report

Month : September 2018

Monthly Comparison



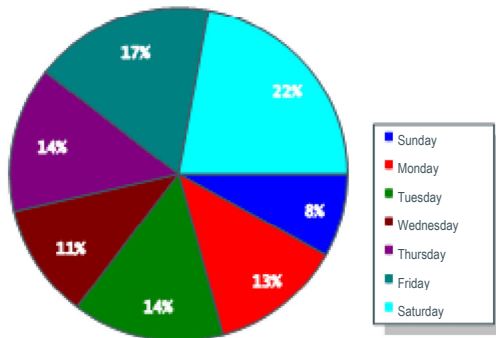
Average Daily Visits



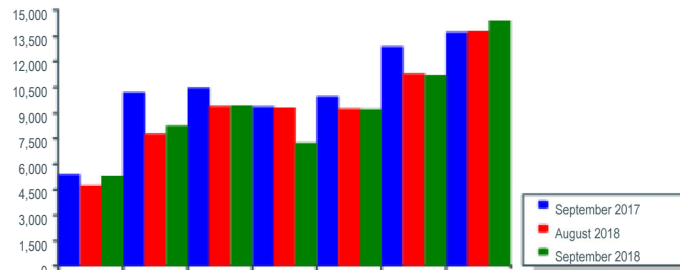
Year	Monthly Average	Year to Date	Pct Change
2016	199,469	110,330	
2017	307,960	2,751,483	2,393.87
2018	300,966	2,550,612	(7.30)
2019	308,615	437,487	(82.85)

Period	Cur	Mon	Tue	Wed	Thu	Fri	Sat
08:00 - 11:00	15.6%	22.8%	23.9%	23.1%	23.6%	24.8%	22.3%
11:00 - 14:00	45.7%	39.4%	39.2%	39.1%	37.9%	39.6%	40.2%
14:00 - 17:00	31.2%	30.2%	28.7%	29.1%	29.1%	26.6%	28.5%
17:00 - 22:00	7.5%	7.6%	8.2%	8.7%	9.4%	9.1%	9.1%

Daily Visits - % of Monthly Total

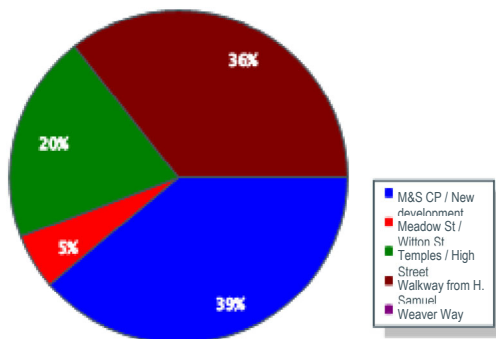


Average Weekly Visits



Month	Sun	Mon	Tue	Wed	Thu	Fri	Sat	Total
August 2018	4,652	7,672	9,294	9,220	9,156	11,181	13,677	64,852
September 2018	5,239	8,116	9,317	7,147	9,124	11,097	14,253	64,293
Pct Change	12.6	5.8	0.2	(22.5)	(0.3)	(0.8)	4.2	(0.9)

Entrance Visits - % of Monthly Total



Annual Performance

