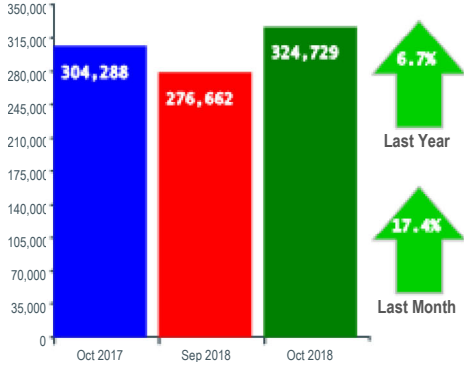


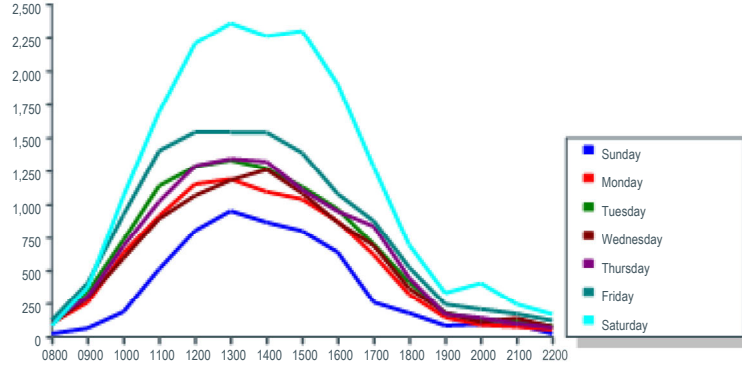
Monthly Report

Month : October 2018

Monthly Comparison



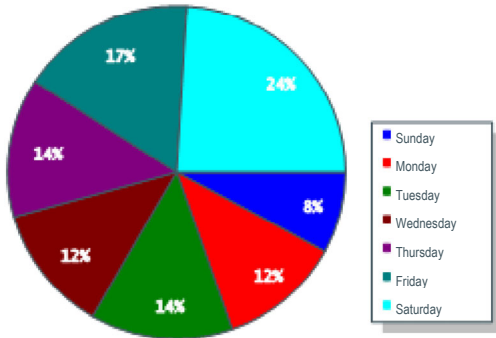
Average Daily Visits



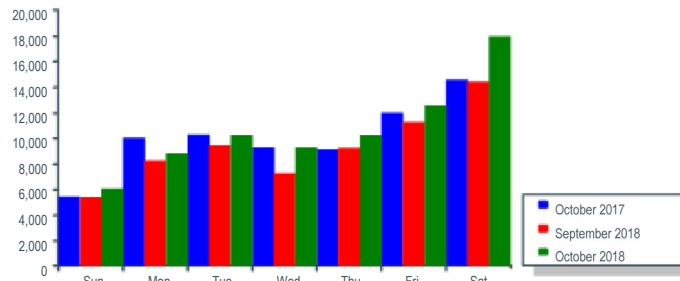
Year	Monthly Average	Year to Date	Pct Change
2016	199,469	301,734	
2017	307,960	3,055,771	912.74 ↑
2018	300,966	2,875,341	(5.90) ↓
2019	308,615	437,487	(84.78) ↓

Period	Sun	Mon	Tue	Wed	Thu	Fri	Sat
08:00 - 11:00	13.7%	21.4%	22.5%	20.2%	20.6%	22.8%	18.1%
11:00 - 14:00	47.1%	40.6%	39.6%	39.9%	40.4%	38.6%	39.5%
14:00 - 17:00	30.6%	30.0%	28.5%	30.0%	29.6%	27.9%	31.7%
17:00 - 22:00	8.6%	8.1%	9.3%	9.8%	9.4%	10.6%	10.7%

Daily Visits - % of Monthly Total

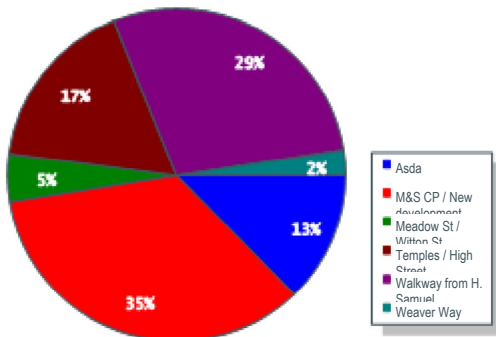


Average Weekly Visits



Month	Sun	Mon	Tue	Wed	Thu	Fri	Sat	Total
September 2018	5,239	8,116	9,317	7,147	9,124	11,097	14,253	64,293
October 2018	5,912	8,700	10,094	9,134	10,096	12,426	17,839	74,201
Pct Change	12.8	7.2	8.3	27.8	10.7	12.0	25.2	15.4

Entrance Visits - % of Monthly Total



Annual Performance

